

Plan Overview

Site Location	San15 district, Negak-ri, Jinjeob-eup, Namyangju-si, Gyeonggi-do			
Area / District	Planned Control Area			
Site Area	13,189.00 m ²			
Plan	Before Revision	After Revision	Difference	Legal Requirements
Function	Logistics Center	Logistics Center	-	Enforcement Decree of the Building Act Addenda 1 Article 18 : Warehouse Facility
Building Coverage	39.9769 %	39.8421 %	-	Below 40% Legal
Floor Area Ratio	77.5750 %	80.9109 %	-	Below 100% Legal
Building Area	5,272.56 m ²	5,254.78 m ²	-	Under 4 floors Legal
Gross Floor Area	24,205.83 m ²	24,357.22 m ²	- 111.22	-
GFA for Floor Area Ratio	10,231.37 m ²	10,671.34 m ²	-	-
Building Scale	3BF / 3F			
Landscaping Area	N/A			
Parking Lot	53 (Regular: 28, Freight: 23, Handicap: 2)		1 per 400m ² = 48	Legal
Structure	Steel Framed Reinforced Concrete, Steel Framed Structure			
Building Height	22.90M (top of parapet)			
Adjacent Road	6M Wide (adjoined over 6M)			
Septic Tank				

Location Map



CoreLogis
Namyangju
Logistics Center
New Construction

* NOTE

Floor Areas for Uses & Levels

	Storage		Office		Loading Dock		Ramp		Canopy		Machine / Elec. Rm.		Total	
	Before Rev.	After Rev.	Before Rev.	After Rev.	Before Rev.	After Rev.	Before Rev.	After Rev.	Before Rev.	After Rev.				
3F	3,971.57	3,975.40	-		-	-	146.63	125.03	103.90	260.00	-	-	4,222.10	4,360.43
2F	64.28	61.90	619.26	619.26	-	-	-	-	-	-	-	-	683.54	681.16
1F	5,125.93	5,129.75	-		-	-	-	-	199.80	500.00	-	-	5,325.73	5,629.75
Subtotal	9,161.78	9,167.05	619.26	619.26	-	-	146.63	125.03	303.70	760.00	-	-	10,231.37	10,671.34
B1F	3,973.86	3,959.64	-		2,591.46	2,626.84	-	-	-	-	-	-	6,565.32	6,586.48
B2F	78.25	74.23	501.16	387.30	-	-	-	-	-	-	196.69	579.41	658.22	658.22
B3F	4,686.13	4,625.59	-		1,697.66	1,667.33	-	-	-	-	445.94	148.26	6,829.73	6,441.18
Subtotal	8,738.24	8,659.46	501.16	387.30	4,289.12	4,294.17	-	-	-	-	445.94	344.95	13,974.46	13,685.88
Total	17,900.02	17,826.51	1,120.42	1,006.56	4,289.12	4,294.17	146.63	125.03	303.70	760.00	445.94	344.95	24,205.83	24,357.22

ADEO

ARCHITECTS

(주)에이디오건축사사무소

8F, 343 Samil-daero,
Jung-gu, Seoul, Korea 06621
T: 02.6929.0177, F: 02.6964.7720

DATE 2018. 6.

Approved by

Drawing by

SHEET TITLE
Plan Overview &
Location Map

SCALE
A1 : 1/NONE, A3 : 1/NONE

SHEET NO.

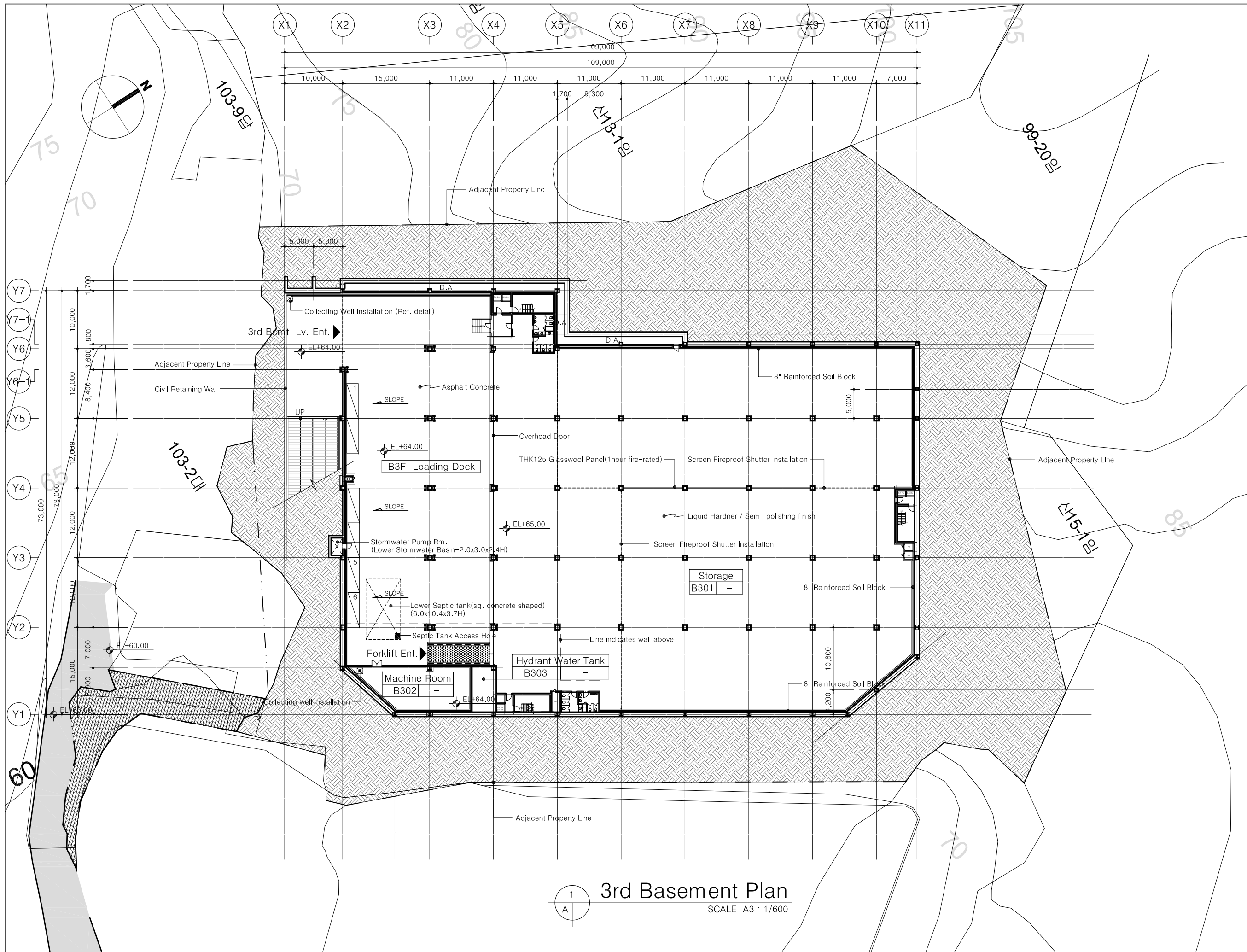
A-101

CoreLogis
Namyangju
Logistics Center
New Construction

* NOTE

Panels -
Use Flame Retardant Materials
or above levels as stated in
Industrial Standardization Act

Wall Panels:
THK75 Urethane Panel
(fire retardant)
Thermal Conductivity of
Internal core materials:
0.020 (W/m K)
Heat Conduction Rate: 0.26 <
Legal : 0.27 (W/m K)



1
A
3rd Basement Plan
SCALE A3 : 1/600

DATE	2018. 6.
Approved by	이형호 건축사
Drawing by	서동욱 이사
SHEET TITLE	3rd Basement Plan
SCALE	A1 : 1/300, A3 : 1/600
SHEET NO.	A-301

CoreLogis
Namyangju
Logistics Center
New Construction

* NOTE

Panels -
Use Flame Retardant Materials
or above levels as stated in
Industrial Standardization Act

Wall Panels:
THK75 Urethane Panel
(fire retardant)
Thermal Conductivity of
Internal core materials:
0.020 (W/m K)
Heat Conduction Rate: 0.26 <
Legal : 0.27 (W/m K)

ÀDEO
ARCHITECTS

(주)에이디오건축사사무소

8F, 343 Samil-daero,
Jung-gu, Seoul, Korea 06621
T: 02.6929.0177, F: 02.6964.7720

DATE 2018. 6.

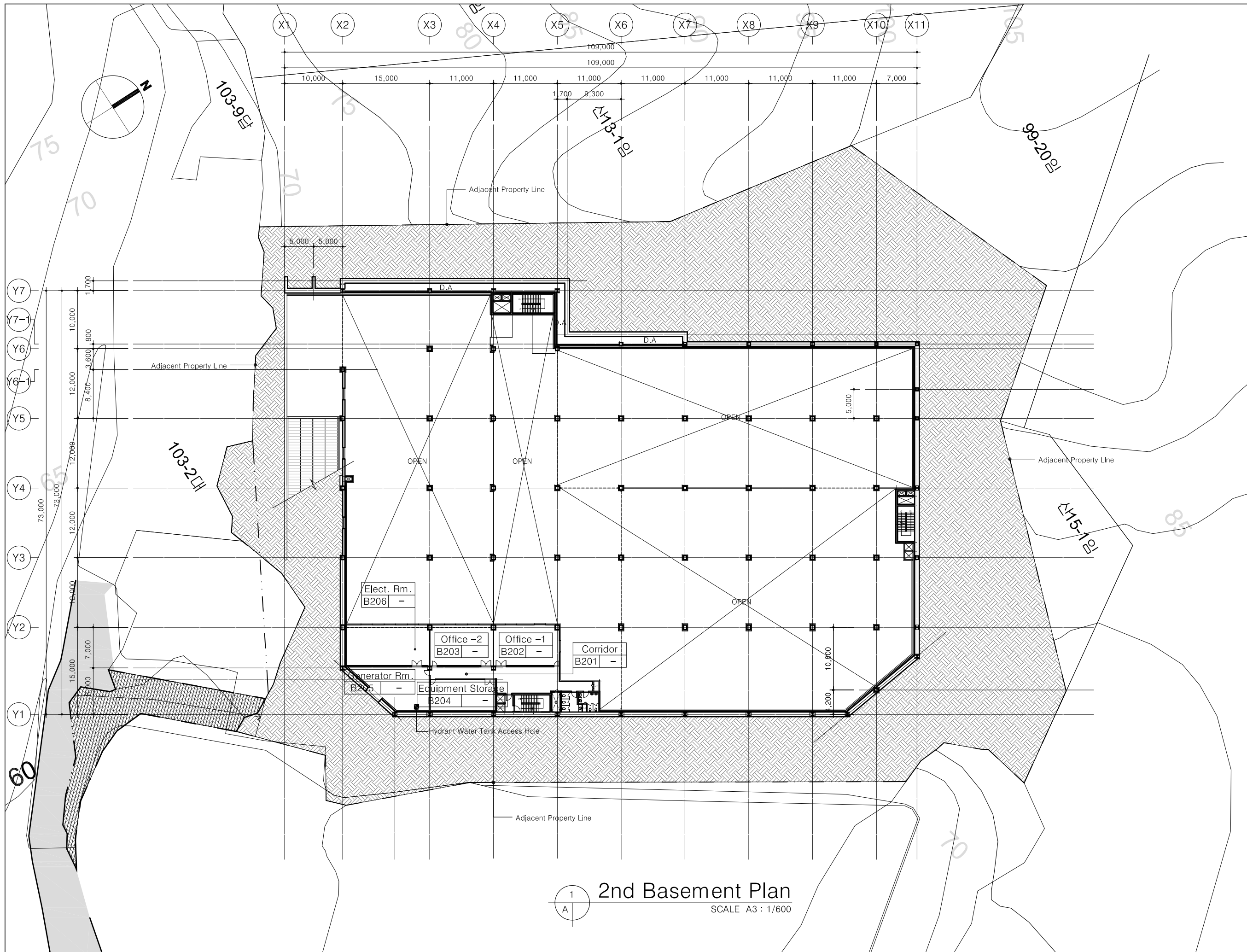
Approved by
이형호 건축사

Drawing by
서동욱 이사

SHEET TITLE
2nd Basement Plan

SCALE
A1 : 1/300, A3 : 1/600

SHEET NO.
A-302



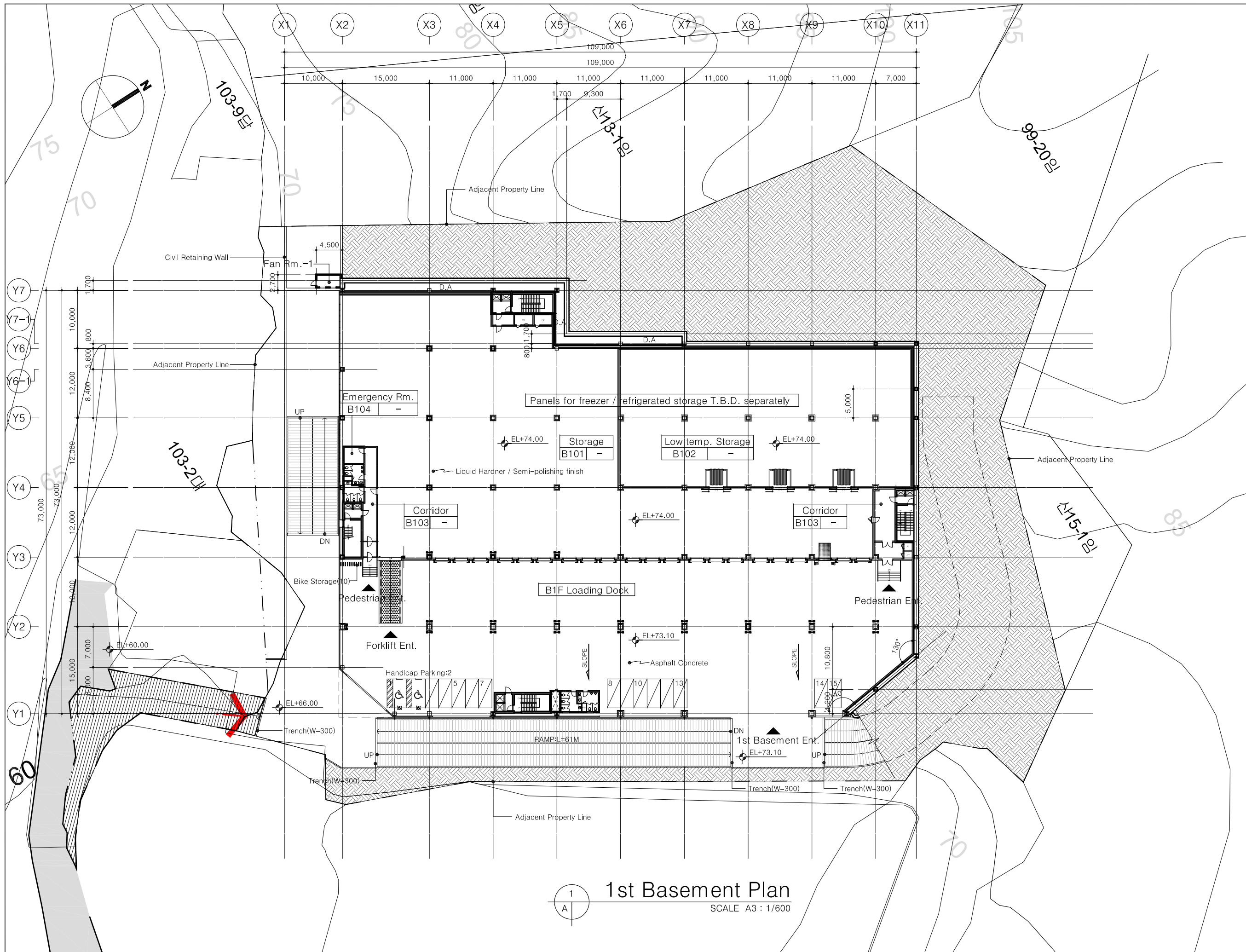
1
A
2nd Basement Plan
SCALE A3 : 1/600

CoreLogis
Namyangju
Logistics Center
New Construction

* NOTE

Panels -
Use Flame Retardant Materials
or above levels as stated in
Industrial Standardization Act

Wall Panels:
THK75 Urethane Panel
(fire retardant)
Thermal Conductivity of
Internal core materials:
0.020 (W/m K)
Heat Conduction Rate: 0.26 <
Legal : 0.27 (W/m K)



1 1st Basement Plan
SCALE A3 : 1/600

ÀDEO
ARCHITECTS

(주)에이디오건축사사무소
8F, 343 Samil-daero,
Jung-gu, Seoul, Korea 06621
T: 02.6929.0177, F: 02.6964.7720

DATE	2018. 6.
Approved by	이형호 건축사
Drawing by	서동욱 이사
SHEET TITLE	1st Basement Plan
SCALE	A1 :1/300, A3 :1/600
SHEET NO.	A-303

CoreLogis
Namyangju
Logistics Center
New Construction

* NOTE

Panels -
Use Flame Retardant Materials
or above levels as stated in
Industrial Standardization Act

Wall Panels:
THK75 Urethane Panel
(fire retardant)
Thermal Conductivity of
Internal core materials:
0.020 (W/m K)
Heat Conduction Rate: 0.26 <
Legal : 0.27 (W/m K)

ÀDEO
ARCHITECTS

(주)에이디오건축사사무소

8F, 343 Samil-daero,
Jung-gu, Seoul, Korea 06621
T: 02.6929.0177, F: 02.6964.7720

DATE 2018. 6.

Approved by

이형호 건축사

Drawing by

서동욱 이사

SHEET TITLE

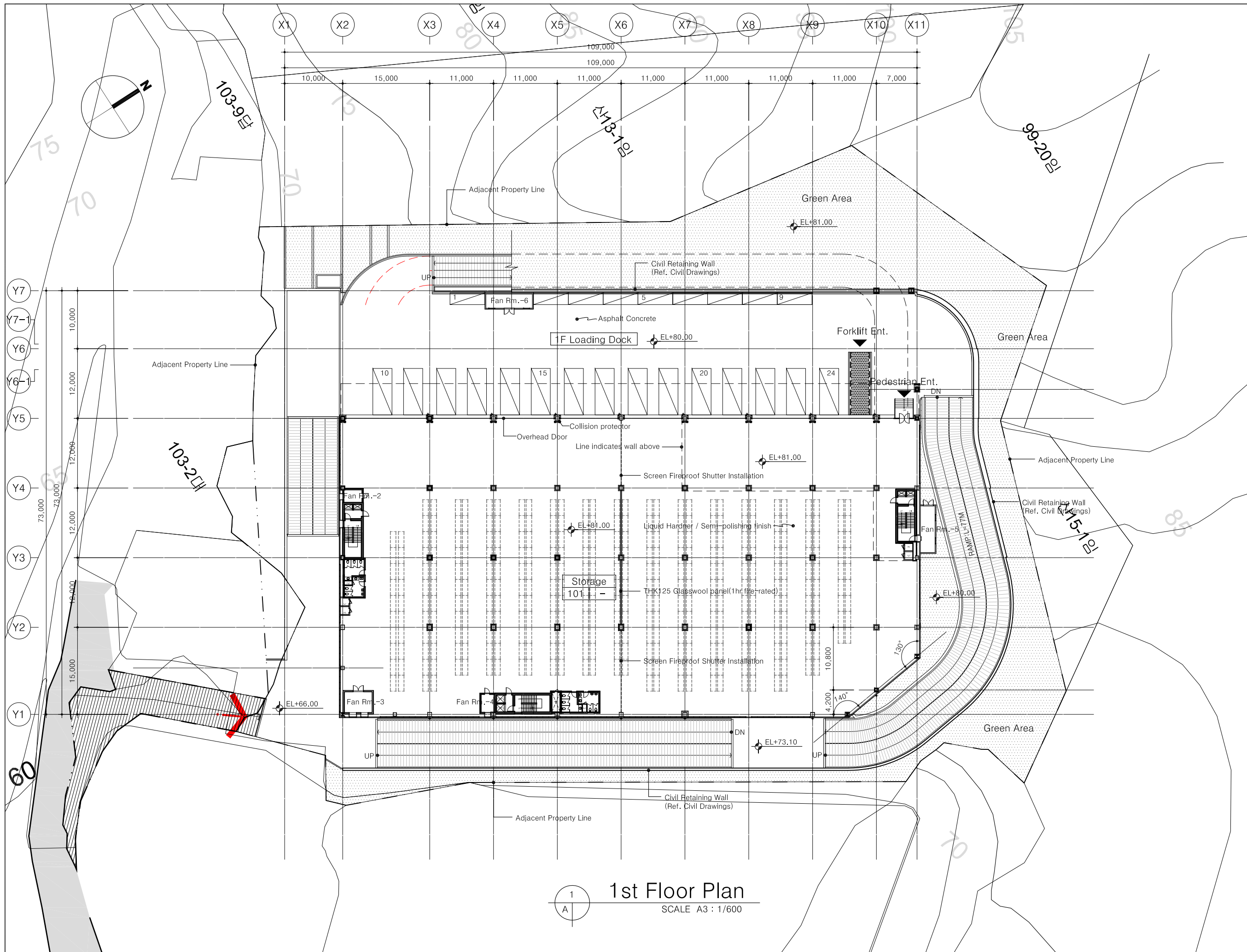
1st Floor Plan

SCALE

A1 : 1/300, A3 : 1/600

SHEET NO.

A-304



1
A
1st Floor Plan
SCALE A3 : 1/600

CoreLogis
Namyangju
Logistics Center
New Construction

* NOTE

Panels -
Use Flame Retardant Materials
or above levels as stated in
Industrial Standardization Act

Wall Panels:
THK75 Urethane Panel
(fire retardant)
Thermal Conductivity of
Internal core materials:
0.020 (W/m K)
Heat Conduction Rate: 0.26 <
Legal : 0.27 (W/m K)

ÀDEO
ARCHITECTS

(주)에이디오건축사사무소

8F, 343 Samil-daero,
Jung-gu, Seoul, Korea 06621
T: 02.6929.0177, F: 02.6964.7720

DATE 2018. 6.

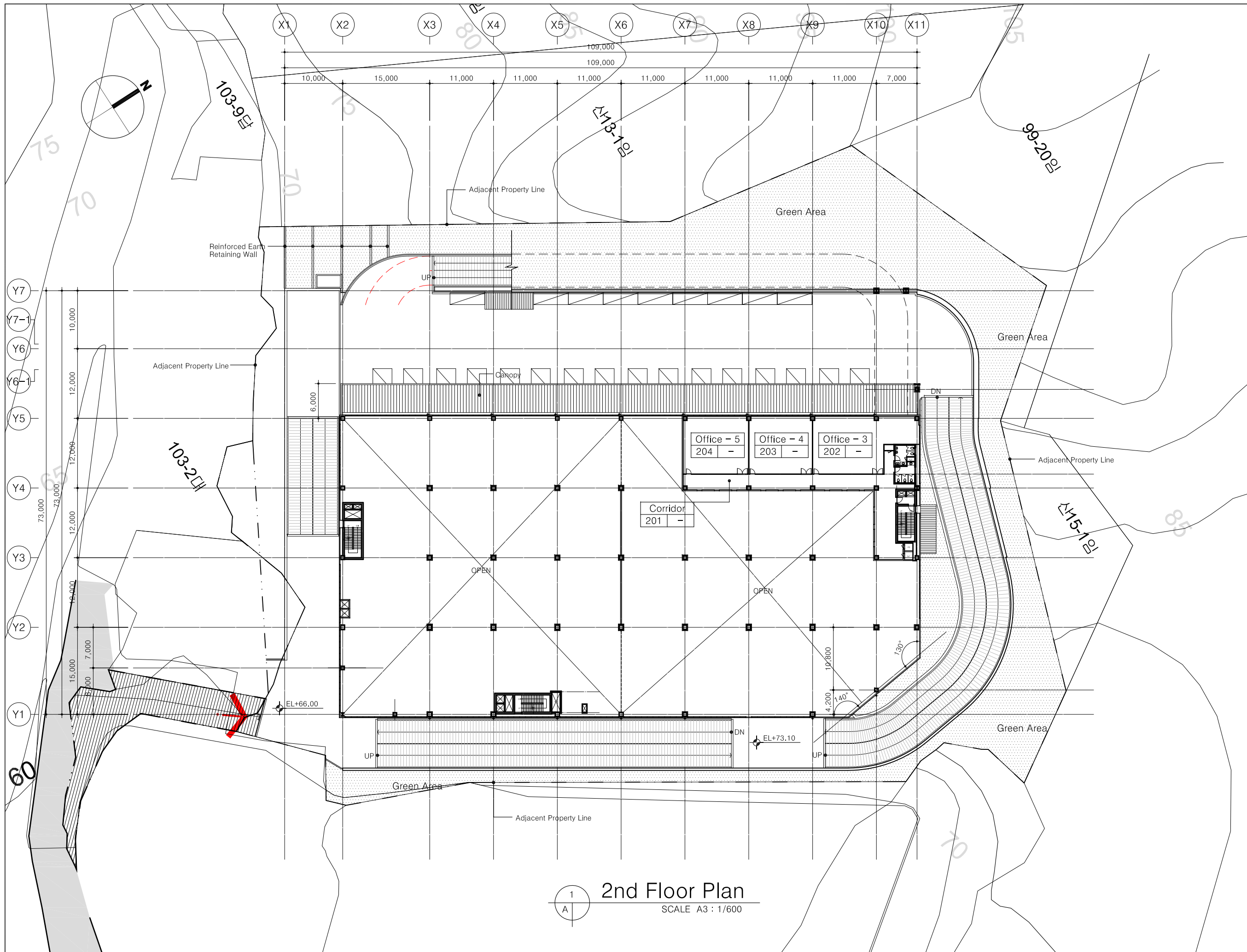
Approved by
이형호 건축사

Drawing by
서동욱 이사

SHEET TITLE
2nd Floor Plan

SCALE
A1 : 1/300, A3 : 1/600

SHEET NO.
A-305



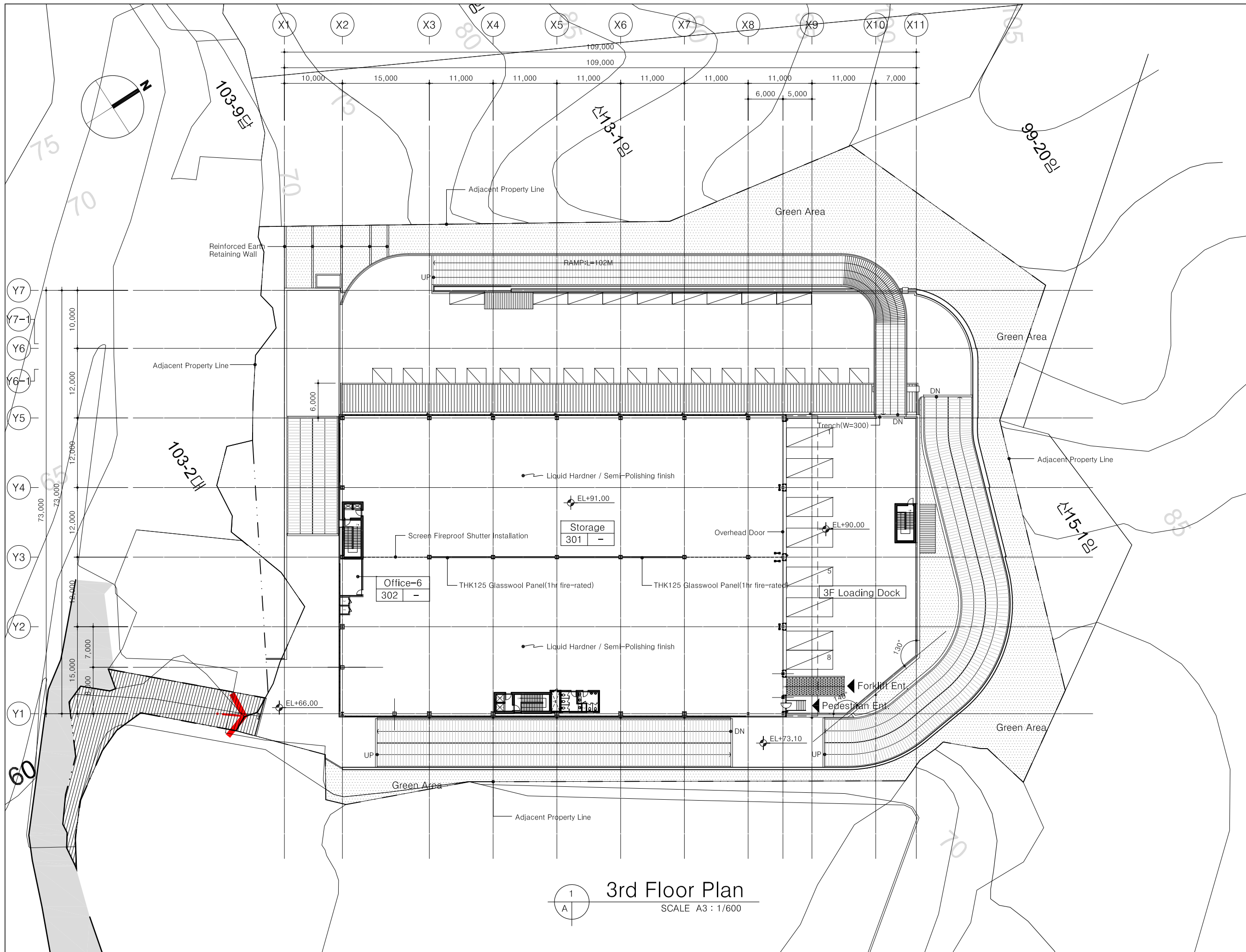
1
A
2nd Floor Plan
SCALE A3 : 1/600

CoreLogis
Namyangju
Logistics Center
New Construction

* NOTE

Panels -
Use Flame Retardant Materials
or above levels as stated in
Industrial Standardization Act

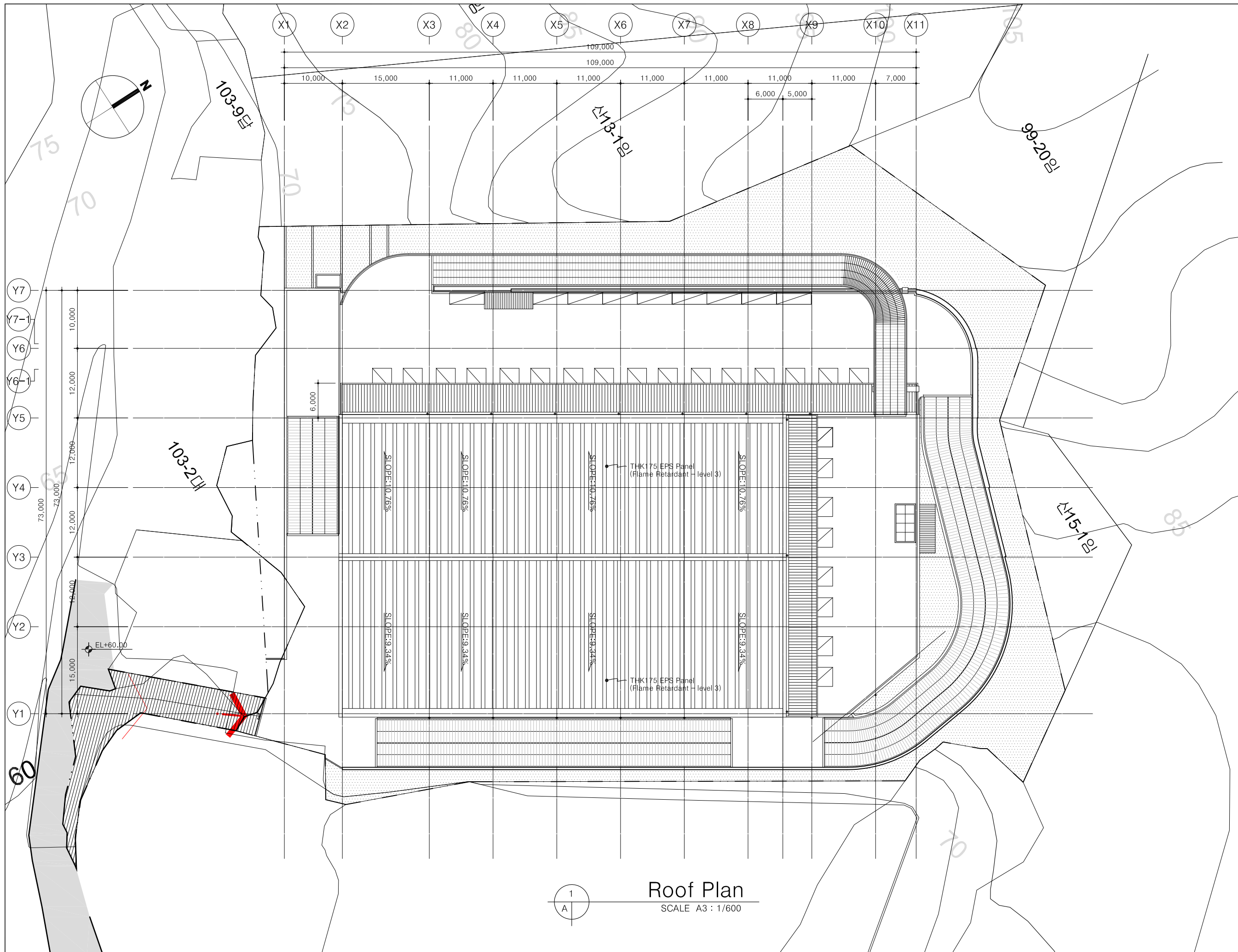
Wall Panels:
THK75 Urethane Panel
(fire retardant)
Thermal Conductivity of
Internal core materials:
0.020 (W/m K)
Heat Conduction Rate: 0.26 <
Legal : 0.27 (W/m K)



1
A
3rd Floor Plan
SCALE A3 : 1/600

ÀDEO
ARCHITECTS
(주)에이디오건축사사무소
8F, 343 Samil-daero,
Jung-gu, Seoul, Korea 06621
T: 02.6929.0177, F: 02.6964.7720

DATE	2018. 6.
Approved by	이형호 건축사
Drawing by	서동욱 이사
SHEET TITLE	3rd Floor Plan
SCALE	A1 : 1/300, A3 : 1/600
SHEET NO.	A-306



CoreLogis
Namyangju
Logistics Center
New Construction

* NOTE

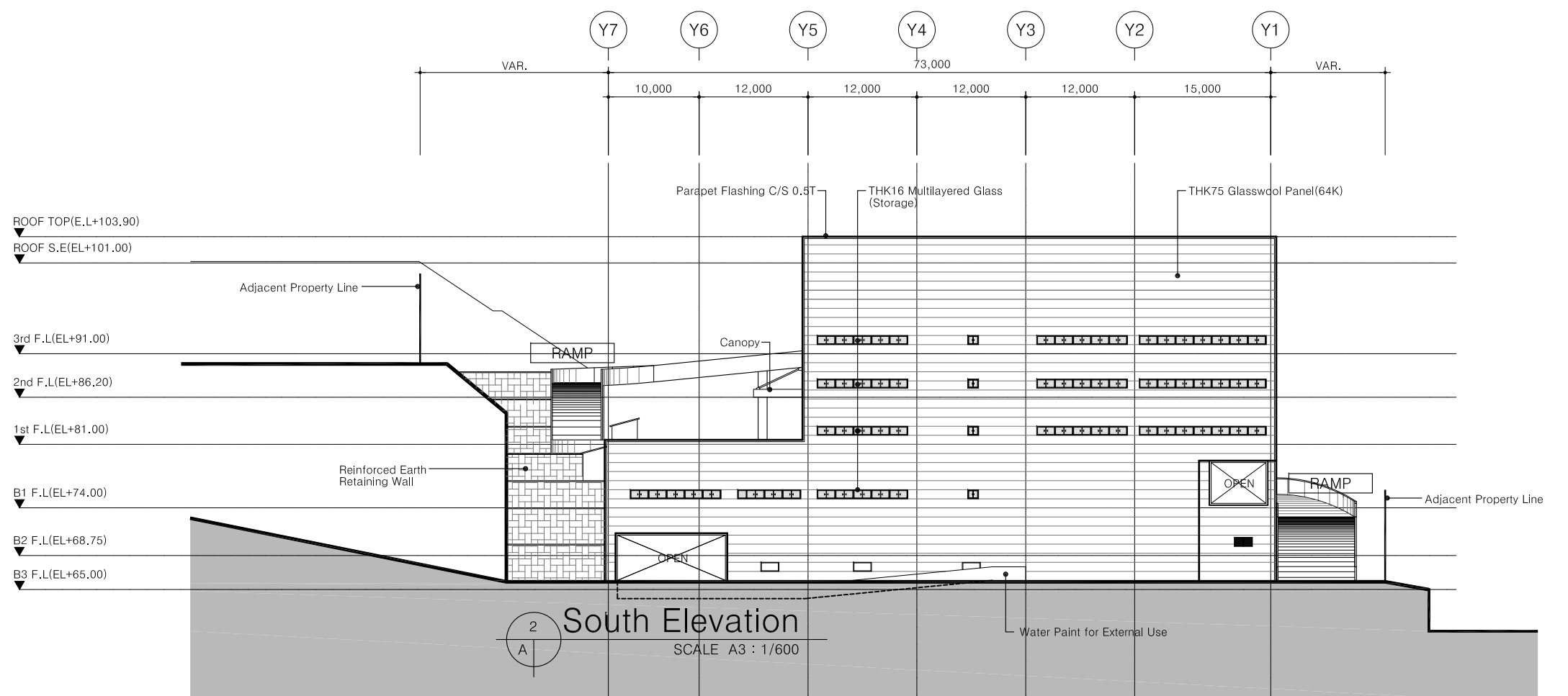
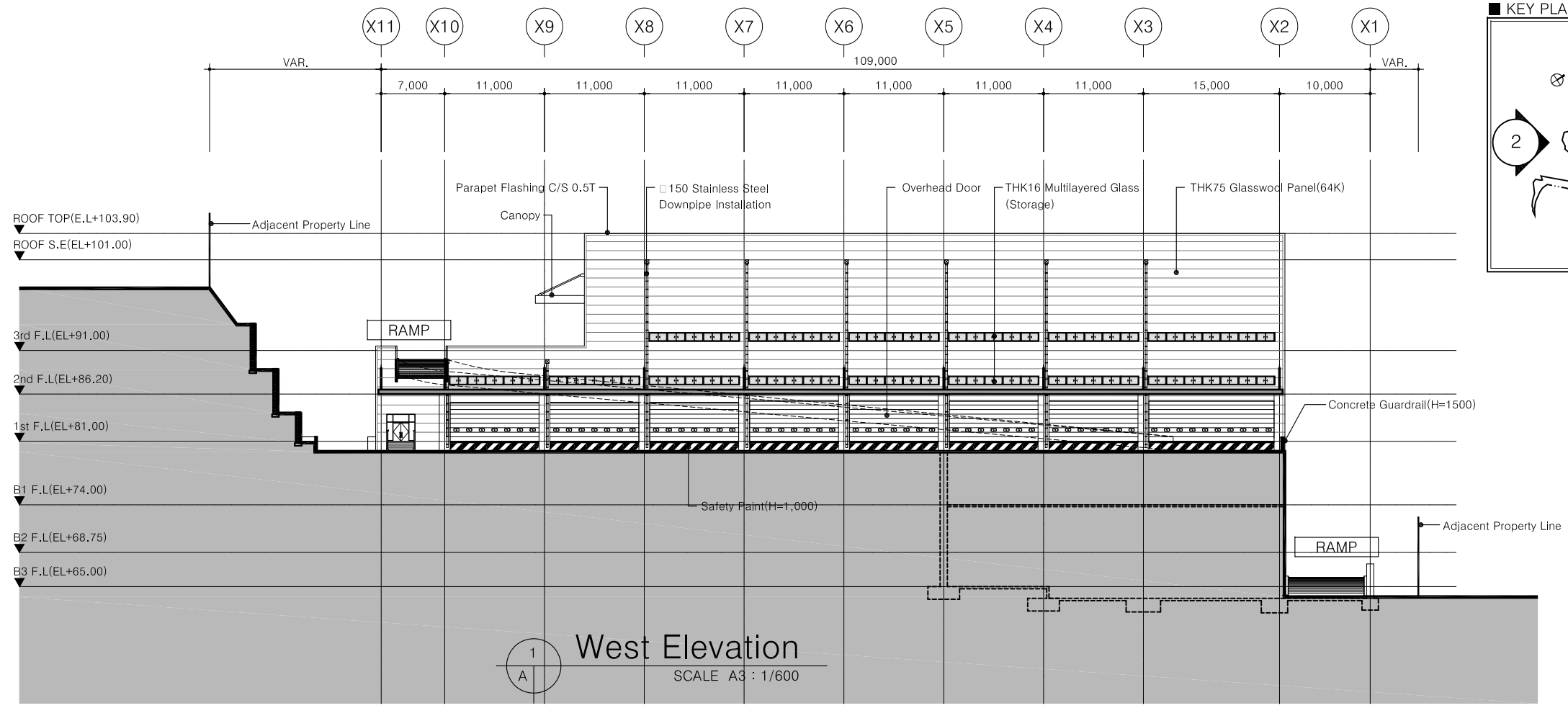
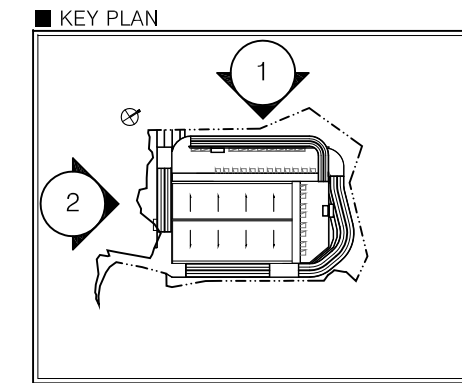
Panels -
Use Flame Retardant Materials
or above levels as stated in
Industrial Standardization Act

Wall Panels:
THK75 Urethane Panel
(fire retardant)
Thermal Conductivity of
Internal core materials:
0.020 (W/m K)
Heat Conduction Rate: 0.26 <
Legal : 0.27 (W/m K)

ĀDEO
ARCHITECTS
(주)에이디오건축사사무소
8F, 343 Samil-daero,
Jung-gu, Seoul, Korea 06621
T: 02.6929.0177, F: 02.6964.7720

DATE	2018. 6.
Approved by	이 형 호 건축사
Drawing by	서 동 욱 이사
SHEET TITLE	Roof Plan
SCALE	A1 :1/300, A3 :1/600
SHEET NO.	A-307

* NOTE



ADÉO
ARCHITECTS
(주)에이디오건축사사무소
8F, 343 Samil-daero,
Jung-gu, Seoul, Korea 06621
T: 02.6929.0177, F: 02.6964.7720

DATE 2018. 6.

Approved by

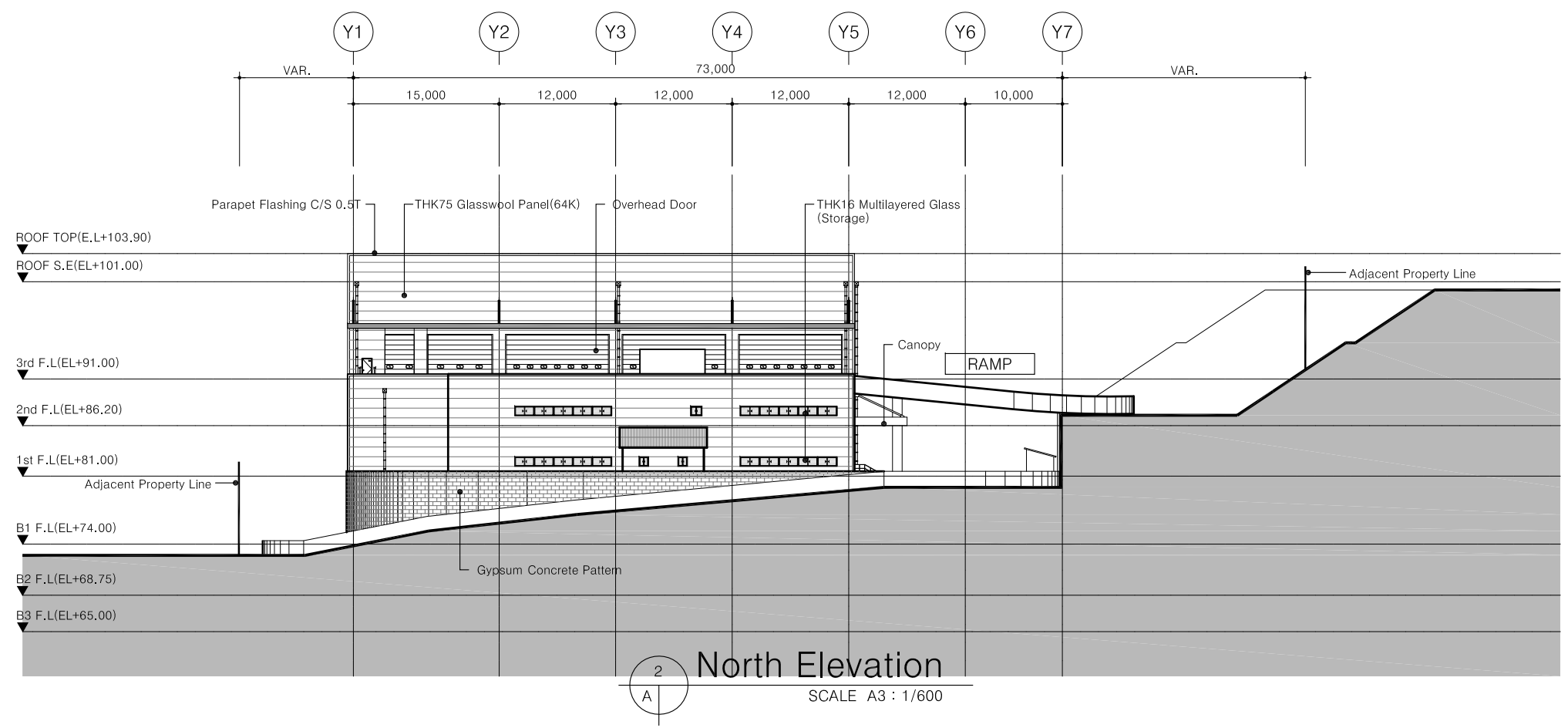
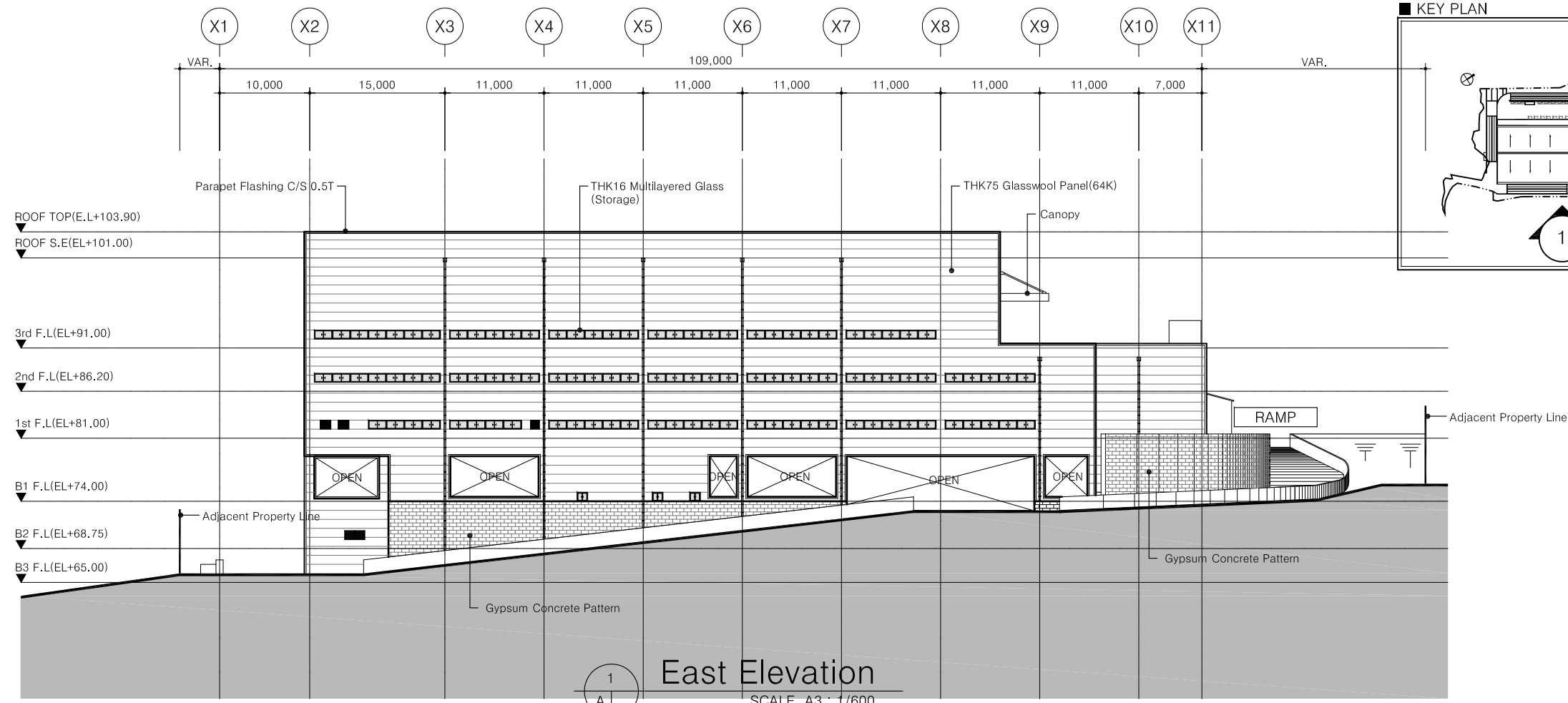
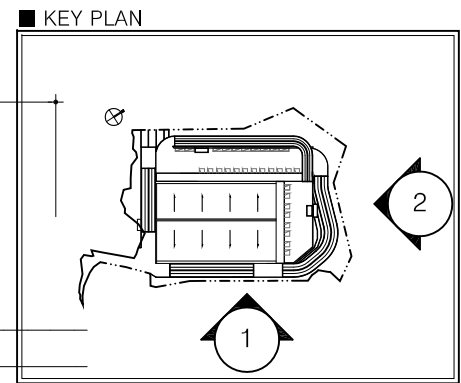
Drawing by

SHEET TITLE
Elevation - 1

SCALE
A1 : 1/300, A3 : 1/600

SHEET NO.
A-308

* NOTE



ÄDEO
ARCHITECTS

(주)에이디오건축사사무소
8F, 343 Samil-daero,
Jung-gu, Seoul, Korea 06621
T: 02.6929.0177, F: 02.6964.7720

DATE 2018. 6.

Approved by

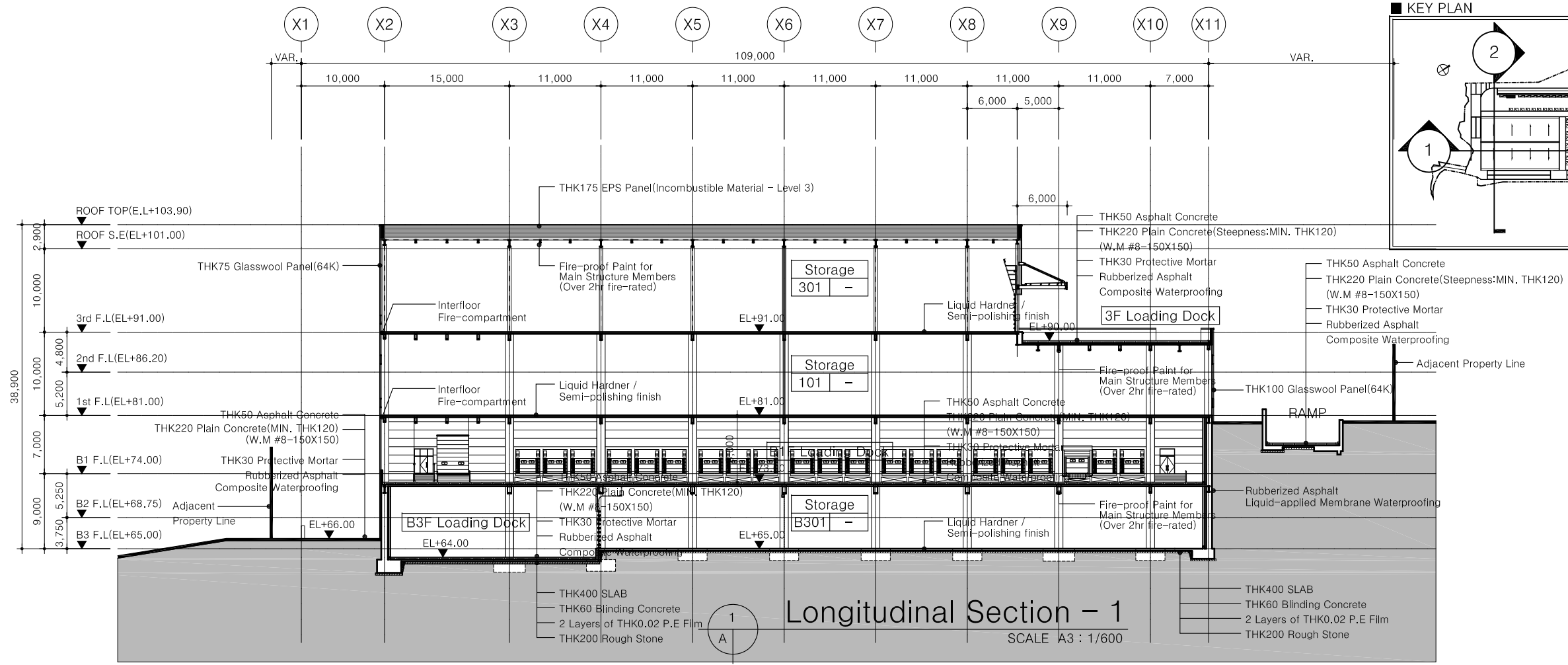
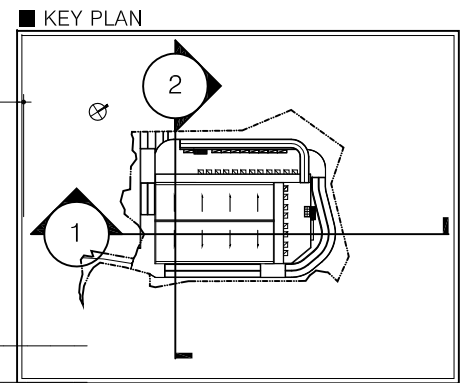
Drawing by

SHEET TITLE
Elevation - 2

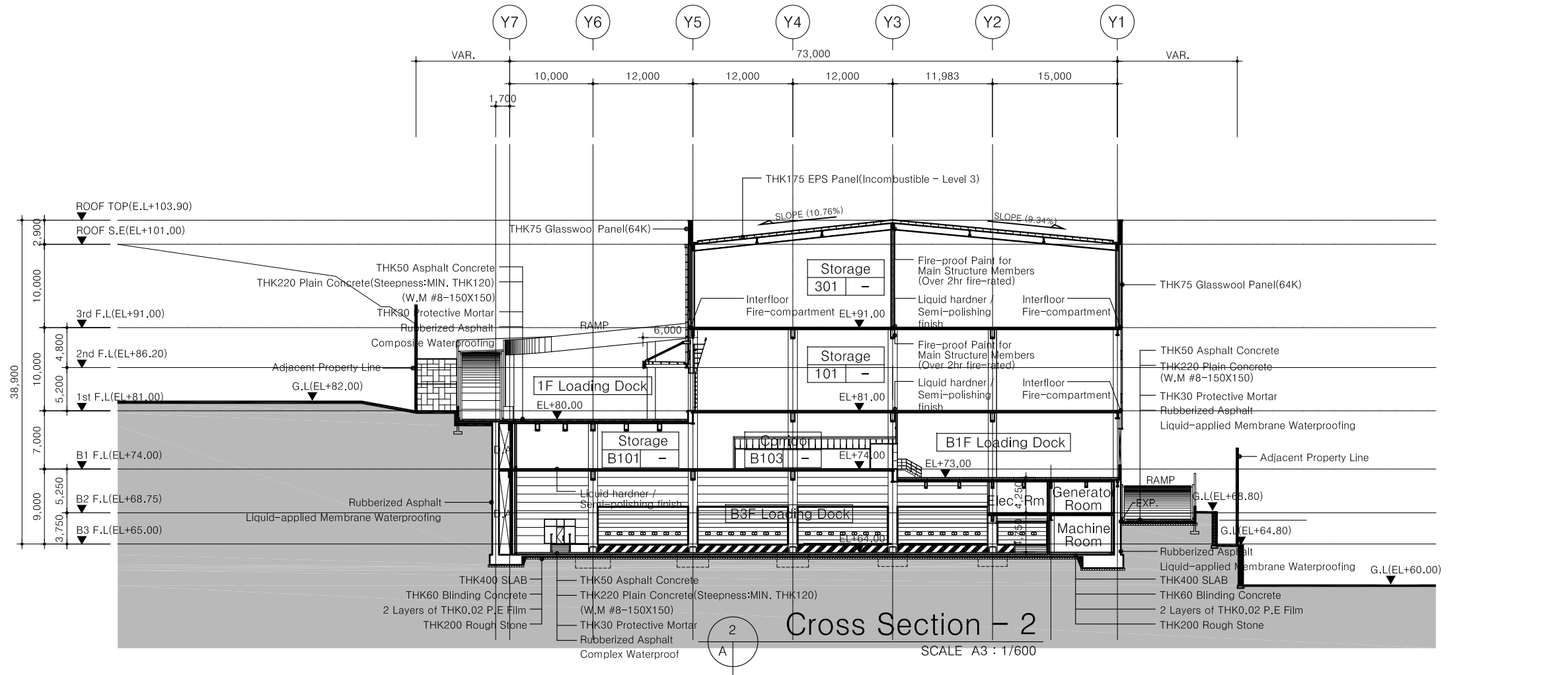
SCALE
A1 : 1/300, A3 : 1/600

SHEET NO.
A-309

* NOTE
 *. Main structure must be constructed by the inspector's permit with the fireproofing spray or paint.
 *. Panels for freezer / refrigerated storage T.B.D. separately.

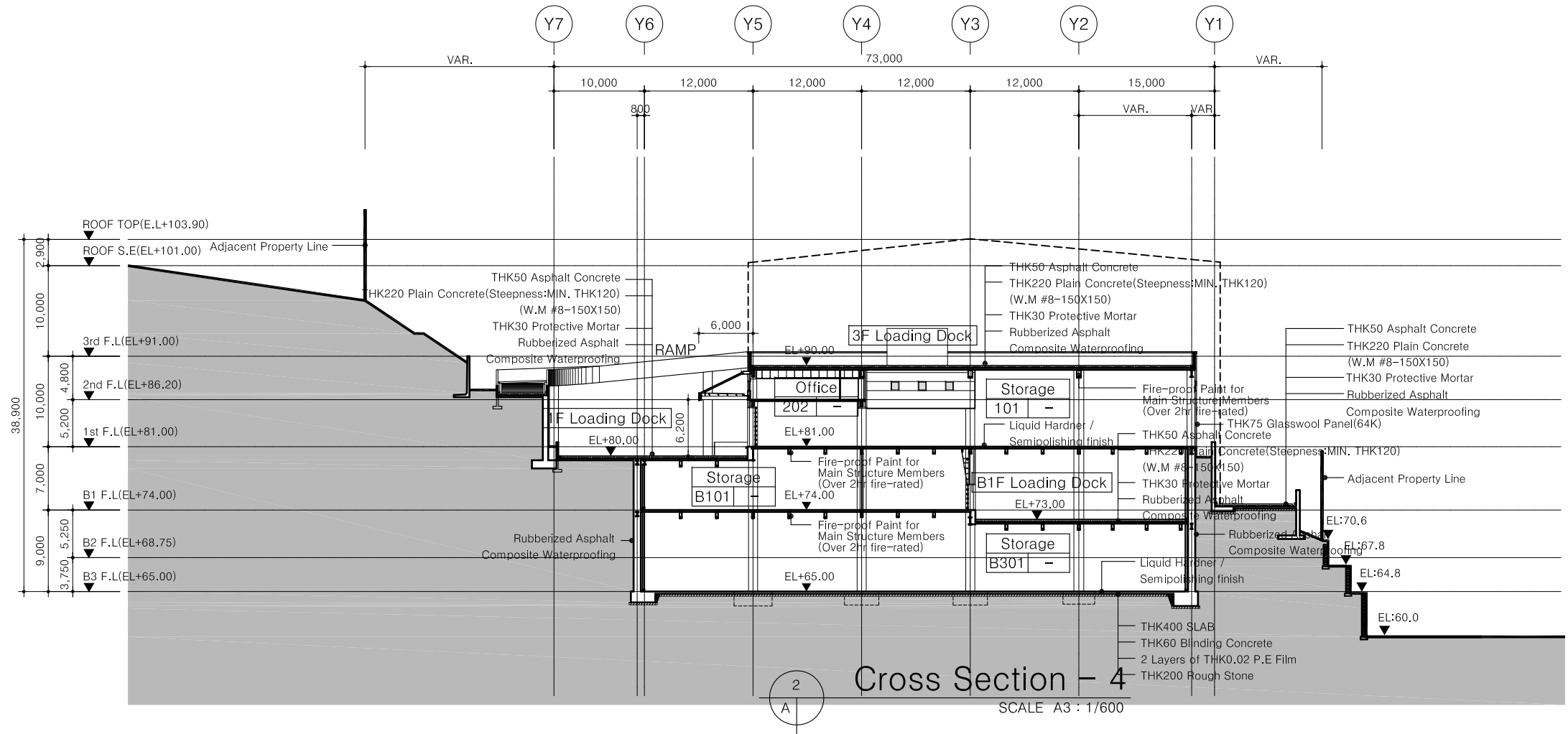
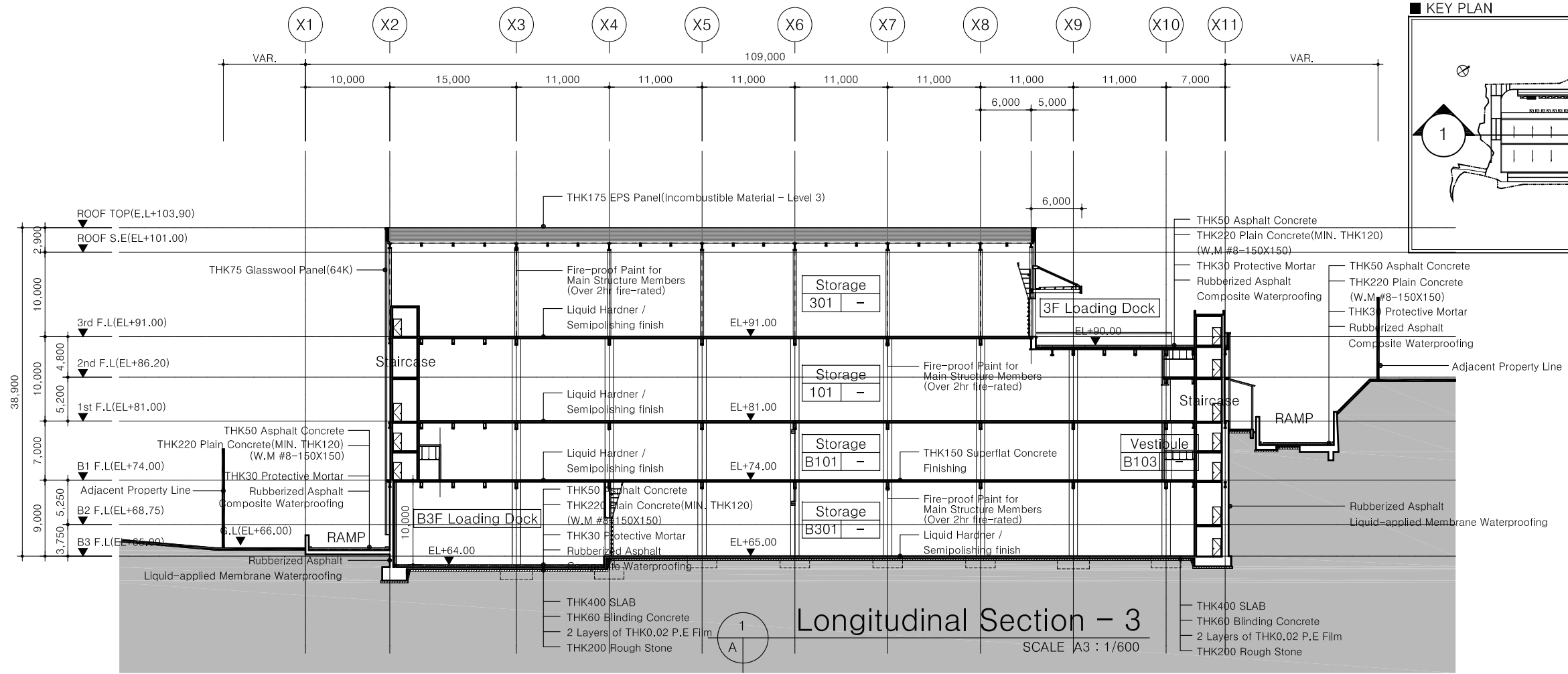
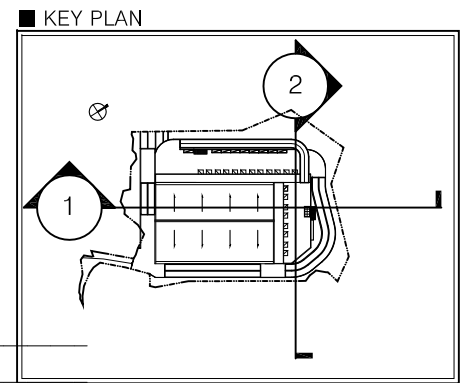


Longitudinal Section - 1
SCALE A3 : 1/600



Cross Section - 2
SCALE A3 : 1/600

* NOTE
*. Main structure must be constructed by the inspector's permit with the fireproofing spray or paint.
*. Panels for freezer / refrigerated storage T.B.D. separately.



DATE 2018. 6.
Approved by
Drawing by
SHEET TITLE
종, 횡 단면도-2
SCALE
A1 : 1/300, A3 : 1/600
SHEET NO.
A-311